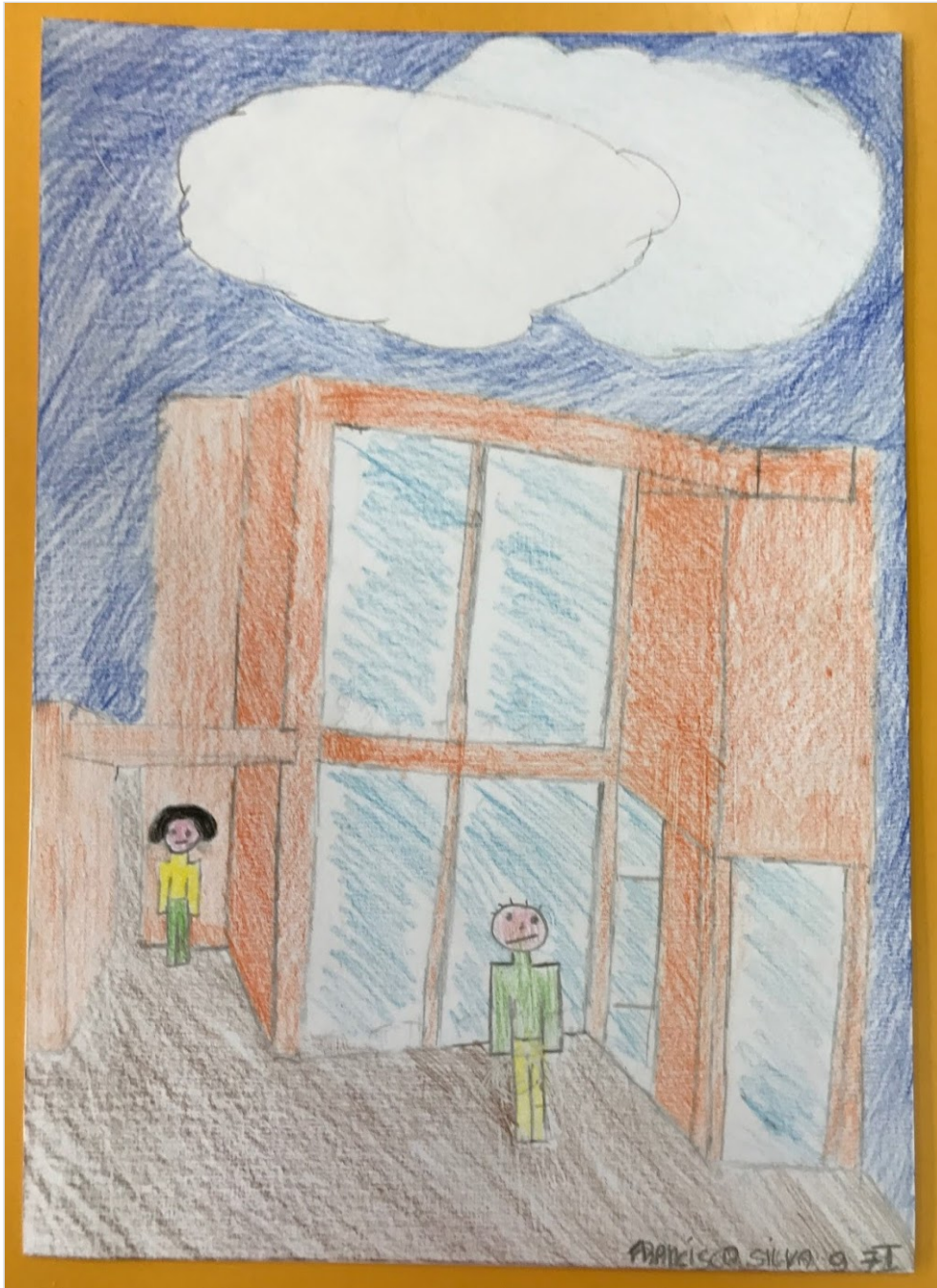


# **Ilustrações de "Cartas da Beatriz", de M<sup>a</sup> Teresa M Gonzalez / sob orientação da prof<sup>a</sup> Dulce Farinha (7<sup>o</sup>I) e prof<sup>a</sup> Lara Paulo (7<sup>o</sup>J e 7<sup>o</sup>K)**

7<sup>o</sup>J e 7<sup>o</sup>K - parcerias EV, EC, BE-ESGN

**BE-ESGN / AEGN** APR 14, 2018 04:40PM

Francisco\_7<sup>o</sup>I



Gonçalo\_7º1



Joana\_7º1





Maria Miranda\_7ºI

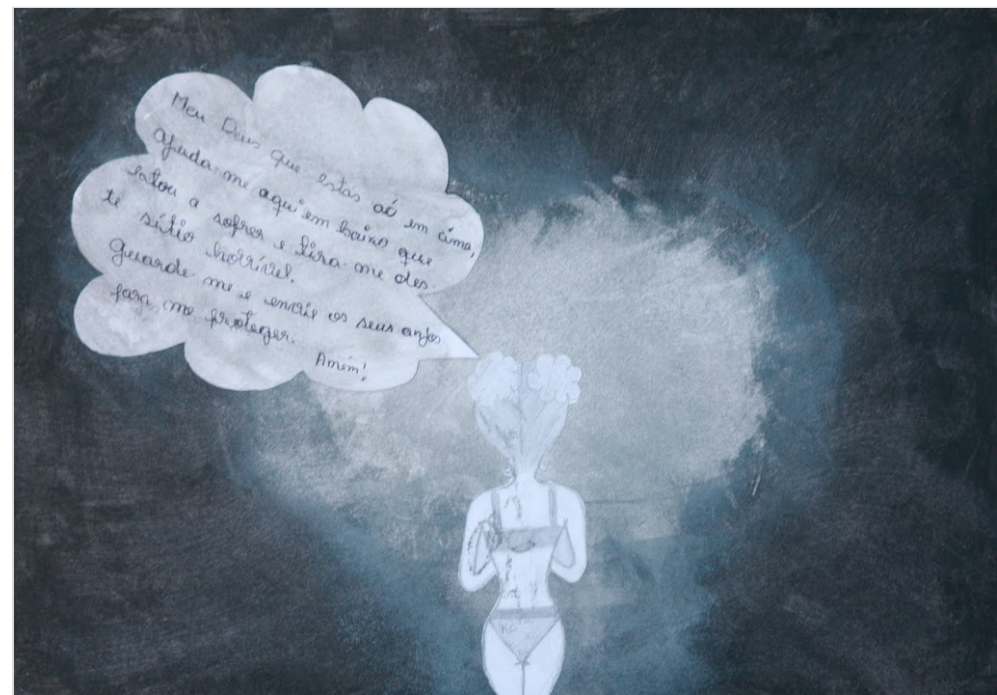


Maria Regislane\_7ºI





Íris Silva\_Ludnela Andrade\_7J



Luana\_Jéssica\_7J

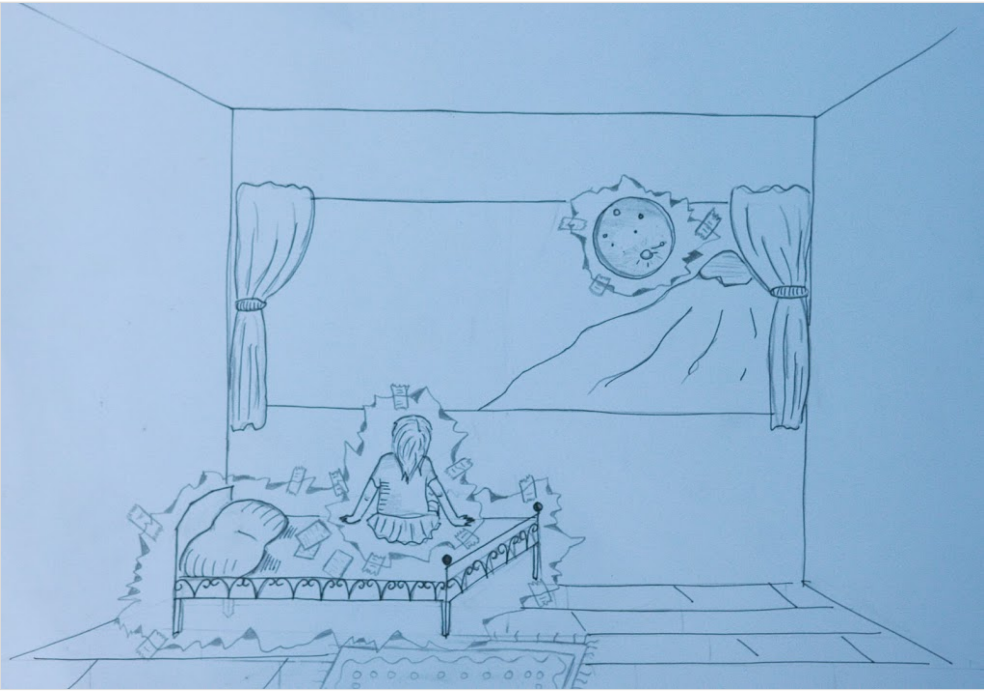






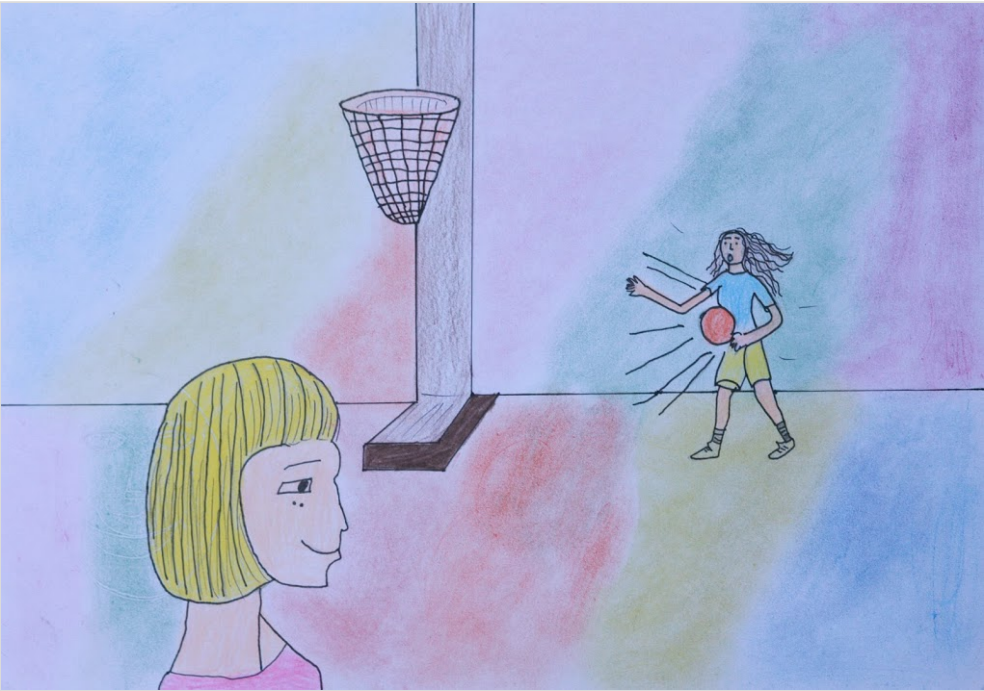


Carlos\_Diogo M\_7K



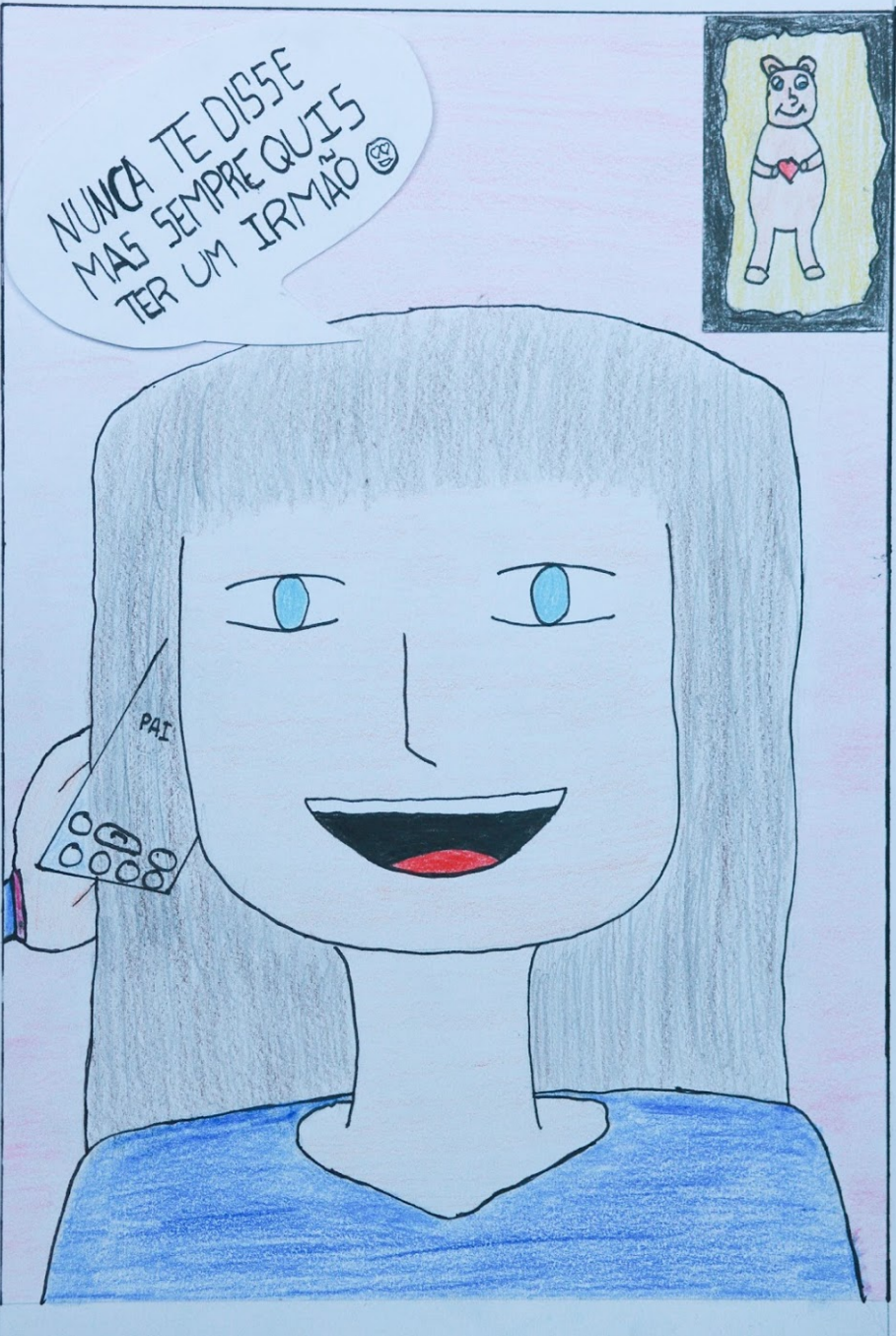
Mª João\_Alexandre\_7K

Tiago\_Emílio\_7K









\*\*\*\*\*